



Digital communications, coupled with TOA audio quality provides an outstanding conference system that can be adapted to fit any size room.

DIGITAL CONFERENCE SYSTEM

TS-D1000 Series



Professional and Passionate

Conference system amplifies
the power and influence of your speech

Minimal Footprint

With its pyramid-shaped contour, the conference unit blends beautifully with any decor.

Natural appearance,
as if protruding from the desk.

Solid Construction

The newly designed case provides an exceptional atmosphere for conferences.



Excellent Coherence and Intelligibility

Speaker and microphone are close to the listener/ presenter to minimize the effort of room acoustics and ambient noise.

The Speaker is right in front of you

The pyramid shape minimizes the surface area obstructing other participant's view. A full spread surface creates a virtual direct path between the presenter and the participants.

Your message reaches the audience perfectly

High Quality Audio

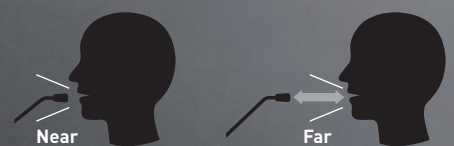
Carefully designed audio processing and hardware enhance audio performances. High quality audio assures that your message get through to the audience.

No Interruption

Advanced feedback suppressor (FBS) minimizes acoustic feedback.

No Missing Words

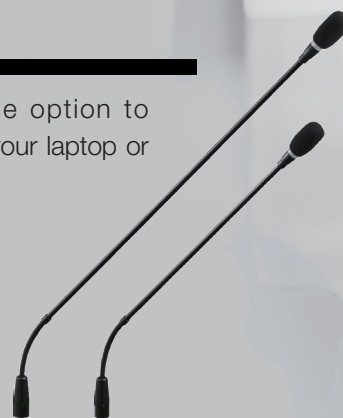
Auto gain control (AGC) function provides uniform sound volume by adjusting the gain based on how loud or soft the speaker's voice is.



Designed to run effective meetings



Long microphone option to make a room for your laptop or documents.





Facilitator-supporting Features

Chairman's Unit Priority Function

- Chairman Unit has priority override control.
- Smooth operation of the conference is assured by a Chairman Unit's priority function.

Setting for Number of Open Microphones

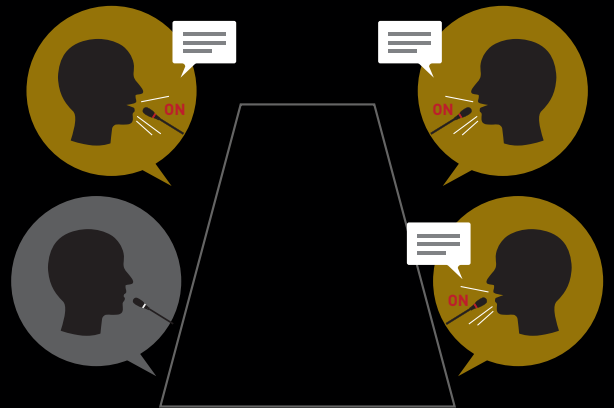
- The number of delegates who speak simultaneously can be limited to make communication go smoothly.
- Up to eight Delegate Units for simultaneous operation is allowed and if one or two Chairman Units are included, they may speak simultaneously.

Participant-supporting Feature

Voice Activation Mode

Start talking instead of pressing the button.

Microphone can be activated in response to a person's voice.



Administrator-supporting Feature

Easy Maintenance

A Shielded CAT5e cable carries signals between conference units or between the Master Control Unit and a conference unit.



Intelligible conversations in conference or board rooms for up to **246** participants.



Master Control Unit | Key Functions



Built-in volume control for monitor speaker.

Operation Mode

STANDARD : Optimized for a meeting where the chairman assigns who will talk the next.

OVERRIDE : Optimized for a meeting where the participants talk in order.

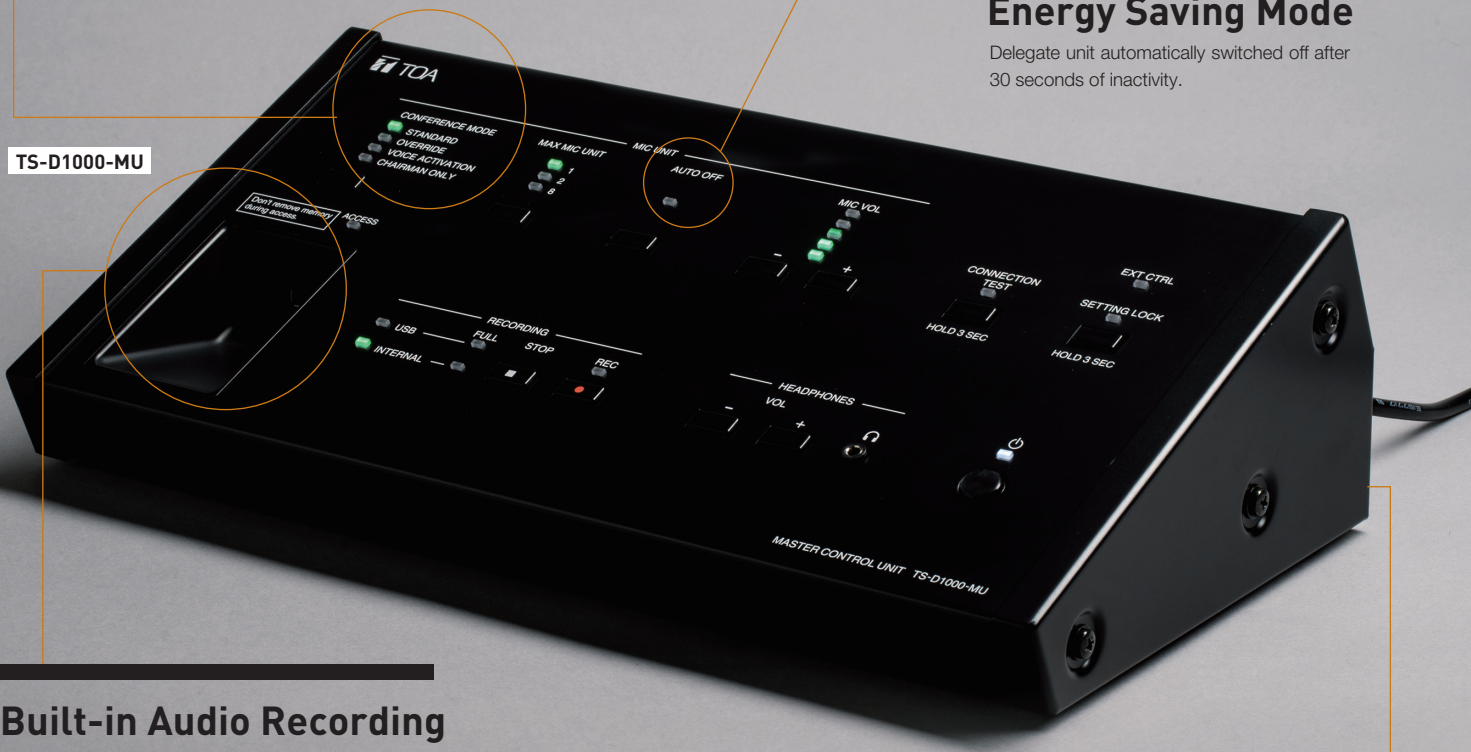
VOICE ACTIVATION : Optimized for an open discussion.

CHAIRMAN ONLY : Optimized for a presentation style meeting. The presenter will reach every participant clearly thanks to a built-in speaker on each unit.

Energy Saving Mode

Delegate unit automatically switched off after 30 seconds of inactivity.

TS-D1000-MU



Built-in Audio Recording

Meetings can be recorded in mp3 format on USB drive or internal memory*.

*Internal recording up to 18 hours at 128 kbps.

A recessed USB port to prevent anyone from accidentally touching the USB drive and breaking it.



Web Browser Application

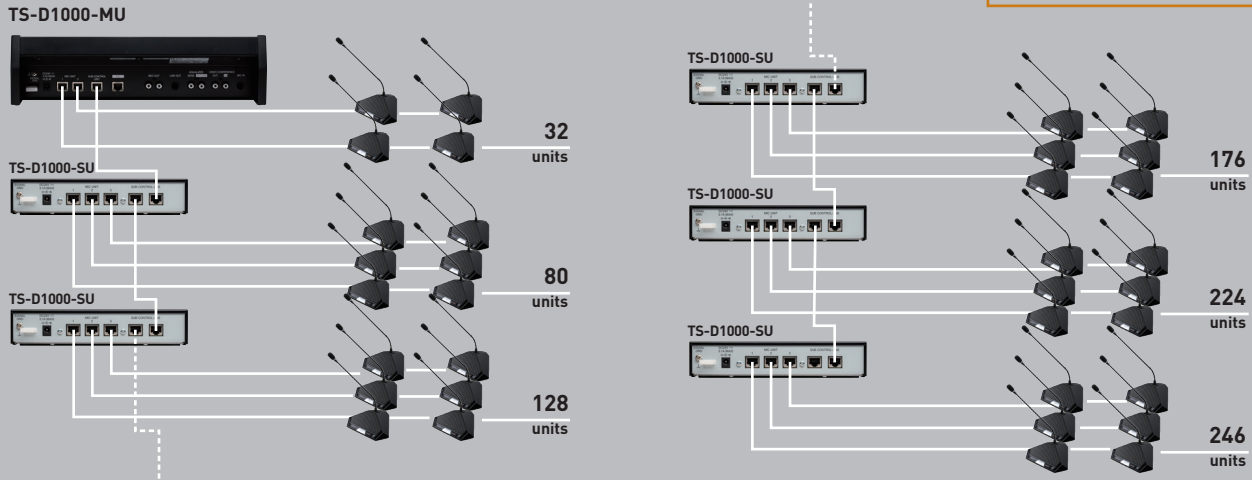
Built-in web browser application is available. Advanced settings can be made from a PC or tablet.



System Configuration / Components

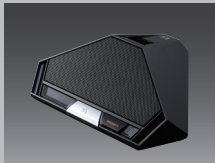
TS-D1000 Series

Max 246 Conference units



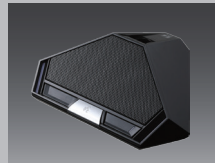
TS-D1000-MU Master Control Unit

- Supports up to 32 conference units
- Mic In, Line Out, Rec Out, Headphone monitor out, EQ In/Out
- Function setting : Number of open microphones, Auto mic-off function, Microphone priority selector
- Rack-mountable with optional MB-TS920 bracket



TS-D1000-CU Chairman Unit

- Chairman unit for basic discussion
- Priority button
- 0.4W monitor speaker
- 2 headphone jacks with individual volume control
- PoE powered



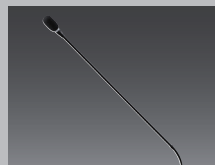
TS-D1000-DU Delegate Unit

- Delegate unit for basic discussion
- 0.4W monitor speaker
- 2 headphone jacks with individual volume control
- PoE powered



TS-D1000-M1 Microphone

- Gooseneck microphone
- Unidirectional electret condenser microphone
- LED shows microphone status
- XLR-3-12C connector
- Sensitivity: -37 dB (1 kHz, 0 dB = 1 V / PA)
- Frequency response: 100 Hz - 13 kHz
- Length: 518 mm (1.7 ft)



TS-D1000-M2 Microphone [Long]

- Gooseneck microphone
- Unidirectional electret condenser microphone
- LED shows microphone status
- XLR-3-12C connector
- Sensitivity: -37 dB (1 kHz, 0 dB = 1 V / PA)
- Frequency response: 100 Hz - 13 kHz
- Length: 668 mm (2.19 ft)



TS-D1000-SU Sub Control Unit

- Controls up to 48 Conference Units
- Up to 5 Sub Control Units connectable to the Master Control Unit with the supplied LAN cable.



TS-D1000-EX Extension Unit

- Provides up to 50m extension over Shielded CAT5e



MB-TS920 Rack Mounting Bracket

- For use with TS-D1000-MU

